



**2009
NOW AVAILABLE!**

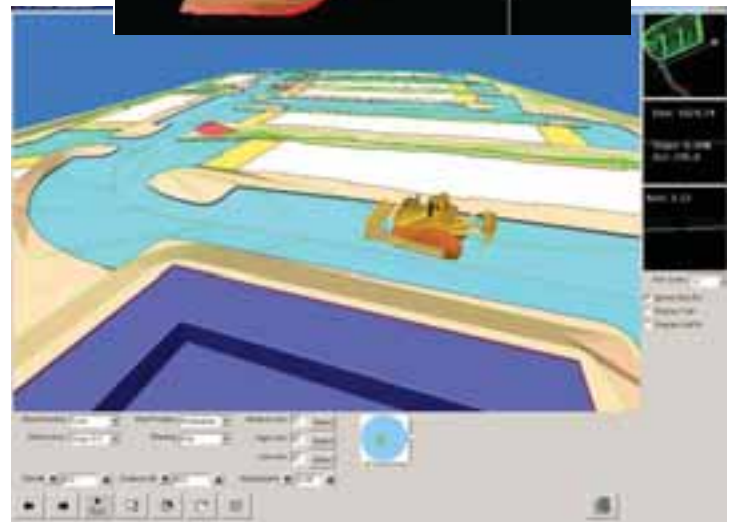
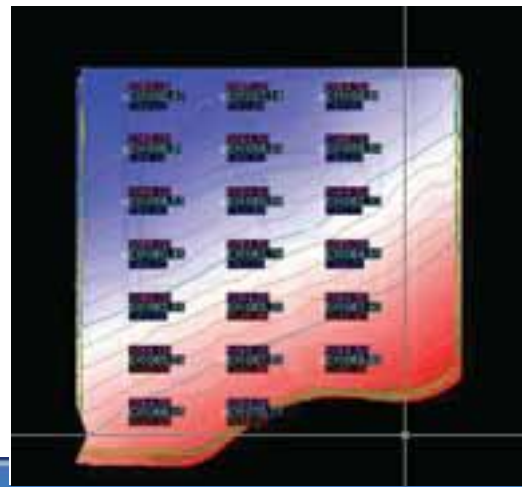
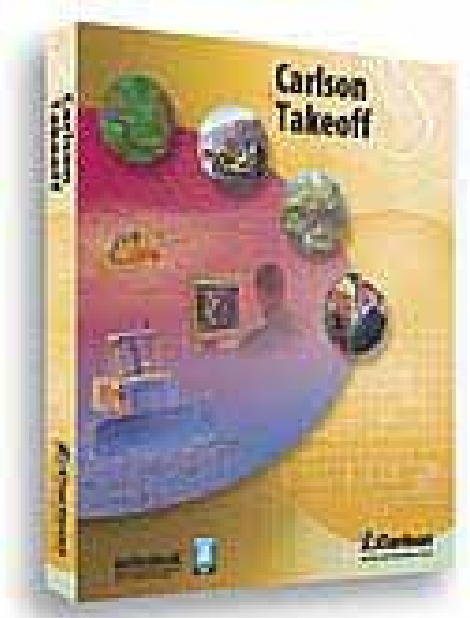
CARLSON TAKE OFF

Carlson Takeoff is the most complete and powerful site estimating software on the market -- available as an AutoCAD-based stand-alone product or as a module of Carlson 2008.

Carlson Takeoff offers critical Drawing Cleanup features and advanced 2D to 3D routines that streamline the estimating process. It can input all data formats, including DWG, DXF, LandXML, and all formats of Centerline, Profiles, and Section Data. Takeoff calculates cut/fill material volumes and has 3D simulation as well as comprehensive reporting. In addition, roadwork, trenching, drill-holes, and sub-grades capabilities are all included for one affordable price

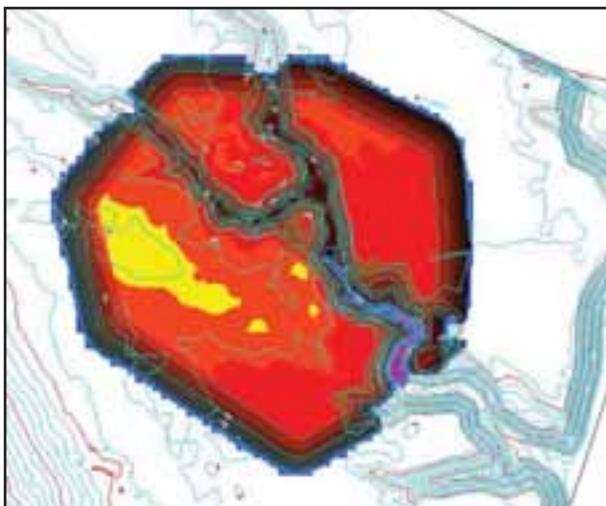
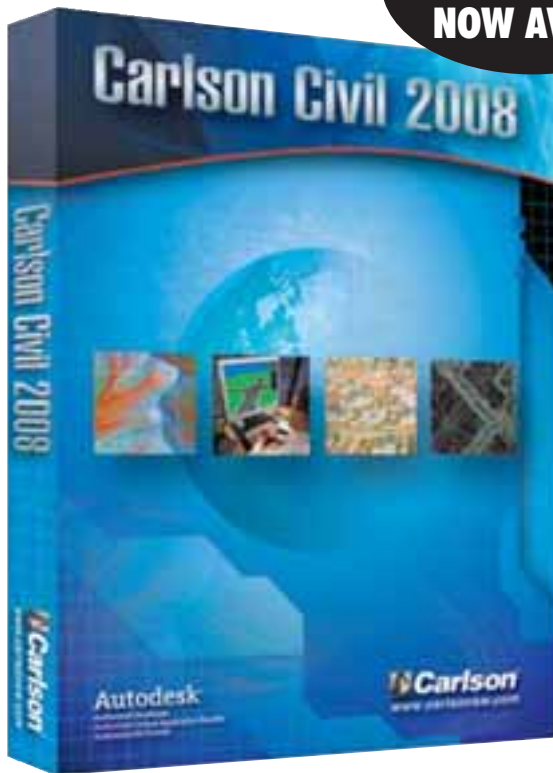
Standard Features Includes:

- Built on AutoCAD 2004 engine.
- 2D to 3D conversion routines for linework and spot elevations.
- Digitizing routines.
- Calculates volumes and material quantities.
- Cut/Fill Color Maps and labels.
- Surfaces are modeled by triangulation
- 3D Drive Over Simulation
- Easy to use: automated routines with reduced prompting
- NEW! Section File Interpolation by Profile
- NEW! Slope Staking:
- NEW! Template Stakeout:





**2009
NOW AVAILABLE!**



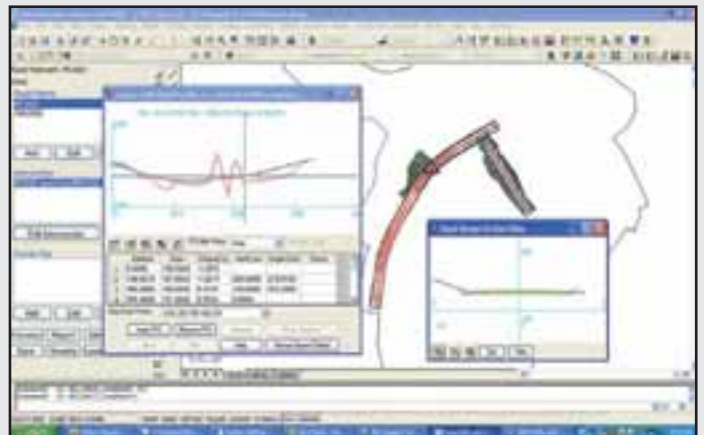
CARLSON CIVIL SURVEY 2008

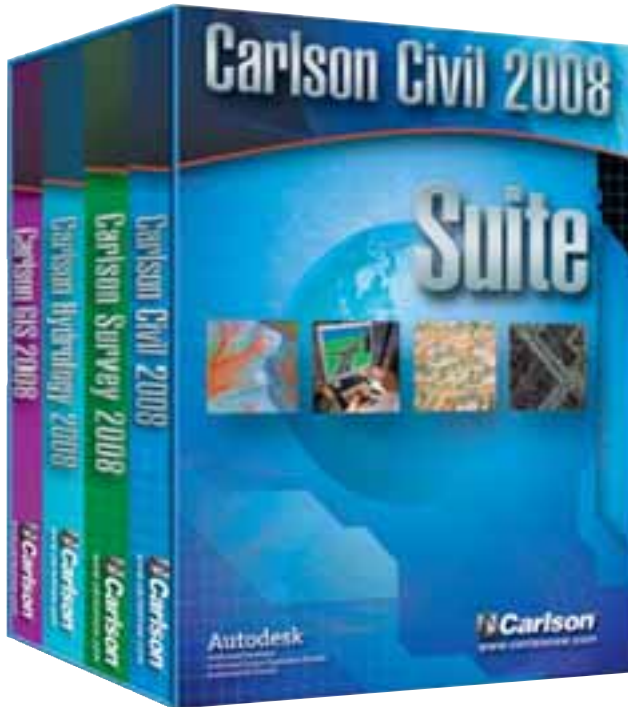
Carlson Civil 2008 is the flagship engineering office product from Carlson Software, containing robust functionality for road design, site and subdivision design and a full compliment of tools for working with points, surfaces and annotation. Built from the Carlson SurvCADD product line, first introduced in 1989, Carlson Civil 2008 delivers a new level of powerful automation, combined with unmatched ease-of-use through dozens of brand new commands, along with hundreds of user-driven improvements.

Standard Features Includes:

- NEW Project Setup – Added ability to define data and drawing folders to associate with drawings. User-defined data folders can be specified for each data file type.
- Drawing Cleanup – Added several new functions such as removing overlapping polyline loops and fixing extruded arcs and text.
- File Selection – For all data file selection, added folder manager to set favorite folders for data files.
- 3D Viewer Window – Added ability to edit entity layers and elevations and to create selection sets.
- Transparent Commands – New transparent command of 'CL for specifying a position by station-offset from a centerline at any point prompt. Created a new transparent command toolbar with this new station-offset command along with the existing '2 and '3 for 2D and 3D points by coordinate file point number commands.
- NEW Layer Inspector – New command to highlight, isolate and/or zoom to layers selected from a docked list.
- Report Formatter – Added more controls for sorting fields.

- NEW Selection Set By Elevation – New command to create a selection of entities within a specified elevation range.
- Add Points At Elevation – Inserts vertices into a 3D Polyline at a specific elevation or elevation interval by interpolating between existing elevations in the polyline.
- Draw 2D Polyline – Added method to enter initial distance and use cursor direction to start the polyline. Added method to specify reference centerline and enter points by station-offset. Added option to enter distances in feet and inches within extend mode. New option to label elevation of polyline.
- Highlight Crossing Breaklines – Added option for tolerance of elevation difference to report and option to merge 3D polyline with contour elevations.
- Remove Arcs Offset – New settings in Configure to control spacing on replacing arcs with chords.
- NEW Variable Offset – New command to offset a polyline with different offset amounts for each polyline segment.
- NEW Move Text – New command to slide text parallel or perpendicular to current rotation.
- Insert Symbols – New dialog interface for pre-defined layer, size and rotation.
- NEW Block/Insert Rotate – New command to set the angle of blocks by various methods.
- NEW Copy Polyline Section – New command to copy a portion of a polyline at the specified points and put copied portion on another layer.
- Align To Nearest Line – In Twist Point Attributes, Rotate Text and Rotate Inserts, added method to select multiple alignment polylines and align the objects to the nearest segment.





**CARLSON
CIVIL SUITE
2008**

**2009
NOW AVAILABLE!**

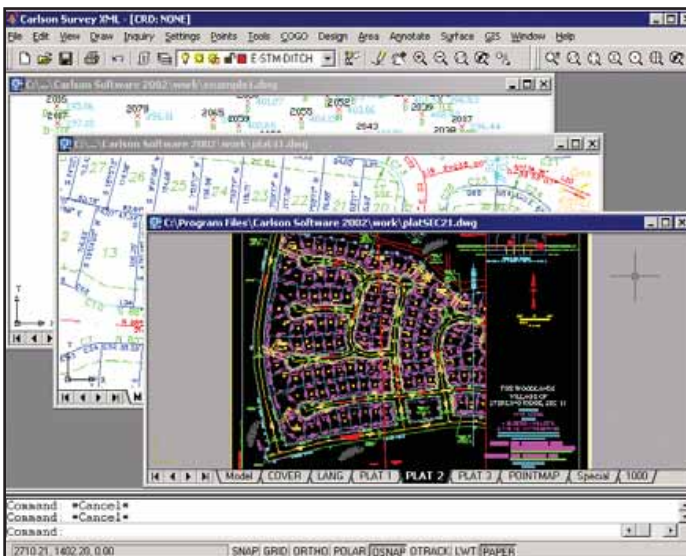
As part of the new Carlson 2008 product line, Carlson Software introduces the Carlson Civil Suite 2008. This new, powerful bundle is made up of: Carlson Survey 2008, Carlson Civil 2008, Carlson Hydrology 2007 and Carlson GIS 2007

Civil Companion Products

Carlson Software has also selected, for your convenience, a group of "Carlson Civil Companions" -- companion products to the Carlson Civil Suite 2008 (or any of the individual four Suite programs) that will provide you with smart options for increasing productivity and reaching your specific goals.

Features Includes:

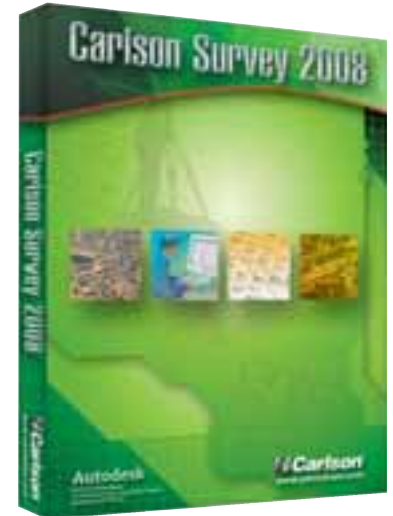
- Carlson SurvCE: Data collection for Windows CE and Pocket PC
- Carlson Field: Take Carlson and AutoCAD to the field for data collection and stakeout with total stations and GPS
- Carlson Takeoff: Construction Estimating for earthworks, subgrades, material quantities, strata quantities and trench networks
- Carlson Point Clouds: Process laser scan data to generate models, breaklines and points
- Carlson Natural Regrade: Design stable land surfaces that follow natural hydrologic and geomorphology principles
- Carlson Geology: Models drillholes and strata structures and attributes



CARLSON SURVEY 2008

Carlson Survey 2008 for AutoCAD is our most productive and intuitive AutoCAD-based survey solution yet. Built from the Carlson SurvCADD product line, first introduced in 1989, Carlson Survey 2008 delivers a new level of powerful automation.

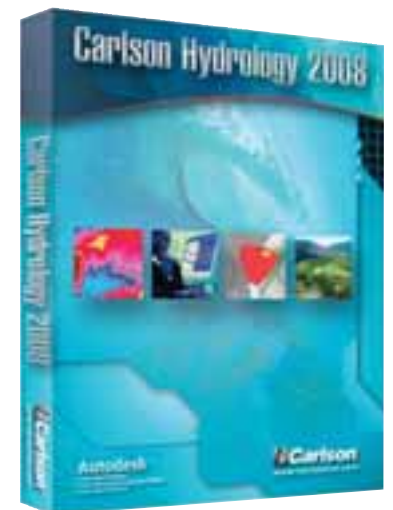
- NEW Project Setup
- Drawing Cleanup
- File Selection
- 3D Viewer Window
- Transparent Commands
- NEW Layer Inspector
- Report Formatter
- NEW Selection Set By Elevation
- Add Points At Elevation
- Draw 2D Polyline
- Highlight Crossing Breaklines
- Remove Arcs Offset
- NEW Variable Offset
- NEW Move Text
- Insert Symbols
- NEW Block/Insert Rotate
- NEW Copy Polyline Section
- Align To Nearest Line



CARLSON HYDROLOGY 2008

Carlson Hydrology 2008 contains powerful features for use in hydrology and engineering. Built from the Carlson SurvCADD product line, first introduced in 1989, Carlson Hydrology 2008 delivers a whole new level of powerful automation

- NEW Project Setup
- Drawing Cleanup
- File Selection
- 3D Viewer Window
- Transparent Commands
- NEW Layer Inspector
- Report Formatter
- NEW Selection Set By Elevation
- Add Points At Elevation
- Draw 2D Polyline
- Highlight Crossing Breaklines
- Remove Arcs Offset
- NEW Variable Offset
- NEW Move Text
- Insert Symbols
- NEW Block/Insert Rotate
- NEW Copy Polyline Section
- Align To Nearest Line



CARLSON GIS 2008

With tools for data capture and linking, data labeling, import/export of SHP files, polygon topology creation and analysis, and more, Carlson GIS 2008 is an awesome GIS "Swiss army knife" for the surveyor or engineer.

- NEW Project Setup
- Drawing Cleanup
- File Selection
- 3D Viewer Window
- Transparent Commands
- NEW Layer Inspector
- Report Formatter
- NEW Selection Set By Elevation
- Add Points At Elevation
- Draw 2D Polyline
- Highlight Crossing Breaklines
- Remove Arcs Offset
- NEW Variable Offset
- NEW Move Text
- Insert Symbols
- NEW Block/Insert Rotate
- NEW Copy Polyline Section
- Align To Nearest Line

